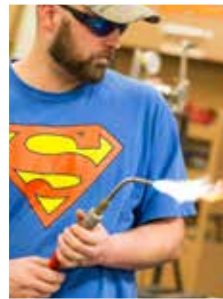


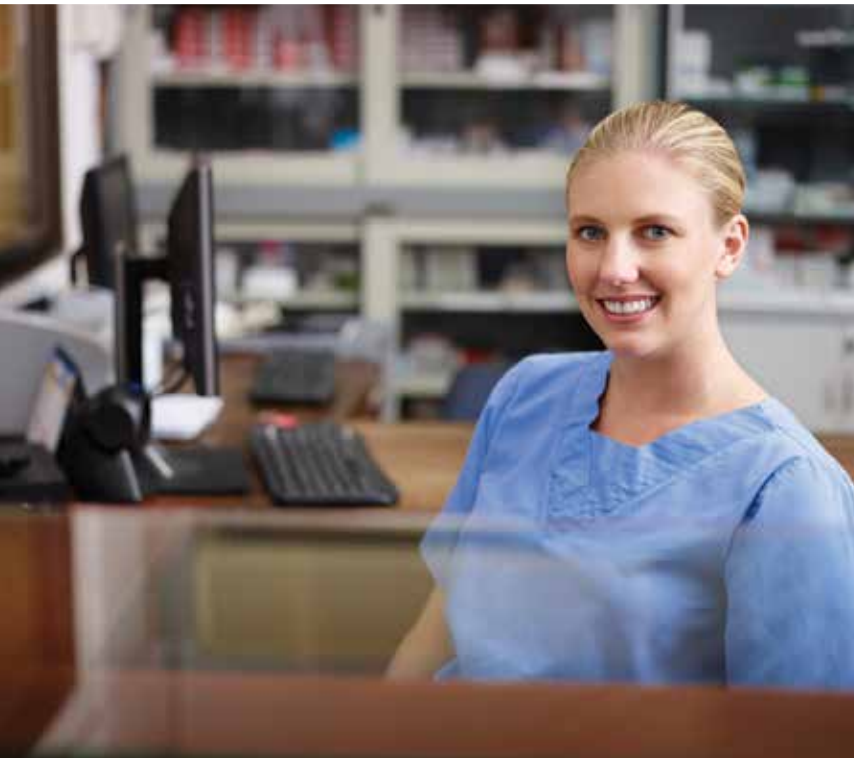


Welcome to Your New SolidaritUS Health Benefit



*For Employees & Families
of Spirit AeroSystems*





What's inside?

	Page
Health Center hours	3
Meet the doctors	3
10 important things to know	4
How to access care	8

Better care and lower costs for you

- + SolidaritUS Health membership is a supplement to your Spirit AeroSystems Medical Benefits Plan.
- + As a member of SolidaritUS Health, you have access to a team of highly qualified and experienced physicians and medical assistants.
- + Complete confidentiality is required by law.
- + Information can be shared with your other physicians based on your direction and authorization.
- + Longer visits can be scheduled with your personal SolidaritUS Health doctor, as needed, to address your personal and family health needs.
- + Members and covered spouses have the opportunity to participate in wellness activities, including establishing personal health goals, tracking progress and achieving goals.
- + Members can earn wellness program incentive dollars by completing physical exams at the SolidaritUS Family Health Center.
- + Periodic physical exams can identify health risks and conditions early on, before they develop into more serious illness. Early diagnosis and appropriate treatment by your SolidaritUS Health doctor can help you maintain good health, preserve your quality of life, and avoid unnecessary medical expenses.
- + Same-day/next-day urgent care appointments are available at no cost to you.
- + Approximately 50 high-quality generic drugs are available onsite at no cost to you with a prescription from a SolidaritUS Health doctor.
- + Select high-quality labs are available at no cost.

SolidaritUS Family Health Center Information

TULSA Temporary Location (<i>opens July 2</i>)	OWASSO Temporary Location (<i>opens July 2</i>)	McALESTER Temporary Location (<i>opens July 2</i>)
4415 S. Harvard Avenue, Suite 210 Tulsa, OK 74135	4415 S. Harvard Avenue, Suite 210 Tulsa, OK 74135	1617 E. Electric Avenue, Suite B McAlester, OK 74501
PH: 539.202.1585; FX: 539.202.1588	PH: 918.528.4733; FX: 918. 528.4739	PH: 918.420.9340; FX: 918.420.9345
HOURS: M / W 11 am–7 pm; T / Th 6 am–2 pm; Fri 6 am–12 pm	HOURS: M / W 6 am–2 pm; T / Th 11 am–7 pm; Fri 9 am–2 pm	HOURS: M / W 6 am–2 pm; T / Th 11 am–7 pm; Fri 6 am–12 pm
Permanent Location (<i>Will open when construction of your new Family Health Center is completed</i>)	Permanent Location (<i>Will open when construction of your new Family Health Center is completed</i>)	Permanent Location (<i>Will open when construction of your new Family Health Center is completed</i>)
4415 S. Harvard Avenue, Suite 209 Tulsa, OK 74135	14601 E. 88th Place North, Suite 302 Owasso, OK 74055	2201 N. Main Street McAlester, OK 74501
Phone & fax numbers will remain the same	Phone & fax numbers will remain the same	Phone & fax numbers will remain the same

NOTE: On July 2, the SolidaritUS physician team will begin providing the full scope of primary care services from the temporary SolidaritUS Family Health Centers sites listed above. We will notify you when construction of the permanent SolidaritUS Family Health Centers is completed in Tulsa, Owasso, and McAlester and your SolidaritUS Health providers.

Meet your physician team:



Paul Brillhart, MD, is certified by the American Board of Family Medicine and is a certified nutritionist. He earned his bachelor's degree from Vanguard University and his Doctor of Medicine degree from Oral Roberts University School of Medicine. Dr. Brillhart enjoys hunting and fishing, writing about nutrition, and playing guitar. He stays active with long-distance running and golf. Dr. Brillhart is from Downey, a southern California suburb.

Owasso



Chris Dalton, DO, is certified by the American Board of Family Medicine. He earned his bachelor's degree from Oklahoma State University (OSU) and his Doctor of Osteopathy degree from OSU College of Osteopathic Medicine. Dr. Dalton enjoys spending time with his three active children as well as fishing, camping, hiking, watching college sports, and barbecuing and smoking meats. He is a Cubs fan. Dr. Dalton is from Tulsa.

Tulsa



Michelle Kelley, MD, is certified by the American Board of Family Medicine. She earned her bachelor's degree from the University of Tulsa and her Doctor of Medicine degree from the College of Medicine, the University of Oklahoma. Dr. Kelley, her husband and two sons enjoy cheering on their favorite hockey teams, taking family vacations, and supporting the arts by attending performances at the Tulsa Performing Arts Center and BOK Center. Dr. Kelley is from Broken Arrow.

Owasso and Tulsa



Mark Rubertus, MD, is certified by the American Board of Family Medicine. He earned his Doctor of Medicine degree from The Ohio State University College of Medicine. Dr. Rubertus enjoys spending time with his wife and five children as well as traveling, exercising and watching movies. He is from Stigler, Oklahoma.

McAlester

NOTE: Appointments with Dr. Kelley can be scheduled one day a week, beginning in July, by calling either the Tulsa or the Owasso Family Health Centers. (See phone numbers above.) Beginning January 2, 2019, appointments with Dr. Kelley can be scheduled five days a week.

Ten Important Things to Know About Your New SolidaritUS Health Benefit

SolidaritUS Health is designed to help each person achieve better health and spend less money on overall health care. Here are some tips to help you optimize this benefit.

- 1 Enrollees in the Spirit AeroSystems Medical Benefits Plan (and other eligible Spirit employees and dependents) may select a personal SolidaritUS Health primary care doctor who practices at the local SolidaritUS Family Health Center you choose. As a member of SolidaritUS Health, you may receive care at any of the Health Centers, whenever one or another is more convenient.*
- 2 The SolidaritUS Health personal or family physician you choose will provide a broad scope of primary care services, including same-day/next-day urgent care appointments, comprehensive health assessment, health coaching, preventive care, sick care, chronic disease management, and overall care coordination—all at no cost to you.*



- 3** *The medical care that a SolidaritUS Health physician provides you and your family members is privileged information between your physician and you. Your family and you can be assured of complete confidentiality of your care at SolidaritUS Health consistent with all applicable federal and state laws protecting confidentiality of patient medical information.*

- 4** *Your SolidaritUS Family Health Center carries approximately 50 commonly prescribed medications that are dispensed to patients with prescriptions from a SolidaritUS Health physician—all at no cost.*

- 5** *Medical staff at SolidaritUS Family Health Centers will perform blood draws and specimen collections and conduct a number of lab tests on site—at no cost to you.*

6 *Scheduling for annual comprehensive health assessments is based on your birthday month. Or, if you prefer, you can schedule your health assessment at another convenient time during the year.*

7 *The SolidaritUS Health primary care physician you choose as your family doctor will be an experienced and highly qualified doctor supported with 21st century technology. Your doctor will personally deliver and coordinate health care for you and your family members and support your efforts to achieve your personal health goals.*

8 *When specialist or hospital care is needed, your SolidaritUS Health doctor remains a partner to you and your family, coordinating your referrals, counseling you on care options, and helping you assure that you receive the care that is right for you, at the right time, and from the right provider.*



9 *SolidaritUS Family Health Centers are designed to engage physicians and patients as partners in attaining patients' personal health goals through health coaching, education, and delivery of personalized care. But you can communicate with your doctor outside the Health Center, too. When it's more convenient, you can communicate remotely with your doctor by telephone, secure text or email, or online audio-visual conference.*

10 *The number of patients under care of each SolidaritUS Health doctor is up to 75% fewer than the number typically seen by a primary care doctor in mainstream, fee-for-service practice. This gives the SolidaritUS Health patient and doctor time to get to know one another. It enables the doctor to understand the patient and deliver care that is tailored to the patient's needs and preferences.*



“The Solidaritus Health primary care model offers a unique opportunity for physicians and patients to become partners in achieving better health outcomes while sharing a rewarding, relationship-based health care experience. Patients enjoy rapid access to quality care. Employers appreciate cost savings due to a healthier workforce. And doctors achieve greater professional satisfaction.”

–Dr. Suzanne Gehl, MD, Director of Clinical Culture

How to Access Care from Your SolidaritUS Health Doctor

Frequently Asked Questions

How do I make an appointment?

Appointments with your SolidaritUS Health doctor can be made quickly and conveniently to address all your health care needs, whether it's a comprehensive physical examination, sick care, preventive care, management of chronic illness, or development of a personalized health action plan.

Here's how:

- 1) **To schedule your first appointment**, call your local SolidaritUS Family Health Center during operating hours. See page 3 for phone numbers.
- 2) **After your first appointment**, you may schedule subsequent appointments by either phoning your SolidaritUS Family Health Center or by scheduling online.

How can I schedule online?

You may schedule an appointment online with your personal doctor at any available appointment time or date provided the appointment is at least 24 hours in advance. You can check your doctor's appointment calendar by visiting www.SolidaritUS.net/connect and clicking the icon of your local SolidaritUS Family Health Center.

What is urgent care?

Urgent care is defined as an illness or injury that requires prompt attention but there is no risk to life or an immediate danger requiring access to emergency services. There may be occasions when you or a family member needs urgent care. Your personal SolidaritUS Health doctor can respond to such an urgent care need quickly at no out-of-pocket cost to you.

- If you aren't sure if a health care need is urgent, you don't have to guess. Contact your personal SolidaritUS Health doctor!
- If you aren't sure if you or a family member needs to visit the emergency room to access emergency care services, contact your personal SolidaritUS Health doctor first! Your doctor can help you make an informed decision.



If I need urgent care, how do I reach a SolidaritUS Health doctor?

If during clinic operating hours:

Call your local SolidaritUS Family Health Center. The receptionist will schedule a visit, a telephone consult, or secure online video conference with your personal doctor for you on the same day or the next day.

If after hours:

If you've had your introductory meeting with the personal doctor you selected, you may contact your personal doctor directly by phone, text, or email provided to you by your doctor.



By phone: If your doctor does not pick up your call right away, leave a message describing the urgent reason for your call. Your doctor will return your call as soon as possible, but within no more than 4 hours.



By text: Your doctor will normally respond within 4 hours, although texts sent during sleeping hours may not be answered until the next morning.



By email: Your doctor will respond within 24 hours.

What if I need emergency care?

If you or a family member has an injury or sudden illness that threatens loss of life, call 911 immediately. Then call your personal SolidaritUS Health doctor.

How can I get after-hours urgent care if I haven't selected my personal doctor yet?

Call the SolidaritUS after-hours hotline at **877.344.6590**.

What kind of health care services can my personal doctor provide?

SolidaritUS Health's personal physicians provide a broad scope of primary care appropriate to each patient. These services include:

- Preventive care
- Episodic sick care
- Urgent care
- Chronic disease prevention and management
- Immunizations
- Medication management
- No-cost Rx dispensing (approximately 50 commonly prescribed medications dispensed in the health center at no cost to members)
- Healthy lifestyle and risk-reduction coaching
- Maintenance of wellness
- A range of in-health-center treatments and procedures
- A range of in-health-center lab tests



And there are no out-of-pocket costs for these health care services...really?

Really, there are no out-of-pocket costs to SolidaritUS Health members. There are no copays, no deductibles, no coinsurance charged to our members for accessing the broad scope of SolidaritUS Health primary care services.

Is there a limit on how much care my family and I can access?

No, there is no limit to your access to appropriate care from your personal SolidaritUS Health doctor. Your personal doctor will provide all the clinically appropriate primary care services you need. Appointments last as long as necessary. We encourage our members to use SolidaritUS Health regularly.

How do I choose a personal doctor for my family and me?

It's easy. Choose a doctor who practices at the SolidaritUS Health Center of your choice. Then schedule an introductory visit with your doctor. That's it!



